



PRO-CELL CO., LTD.

SPECIFICATION FOR APPROVAL

Customer :

Model No. : PA-L02-A096-04

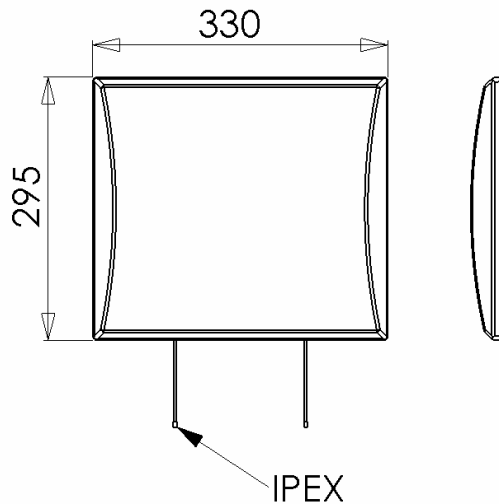
Description : 5.45~5.835GHz PANEL ANTENNA

Date : 2008/07/14

Rev : 1



PRO-CELL CO., LTD.



Electrical Specifications:

Frequency Range :	5.45~5.835GHz
VSWR :	≤ 2.0
Impedance :	$50\Omega \pm 5\Omega$
Gain :	16 dBi
Polarization :	Vertical and Horizontal
Power Handling :	10 Watt
Beam Width :	Vertical :H:13.8 / E: 18.5 Horizontal: H: 17.3 / E: 16.1

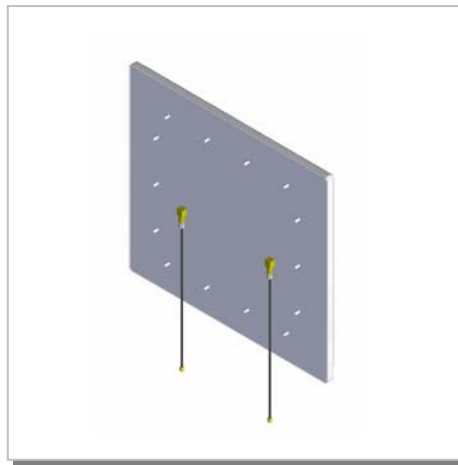
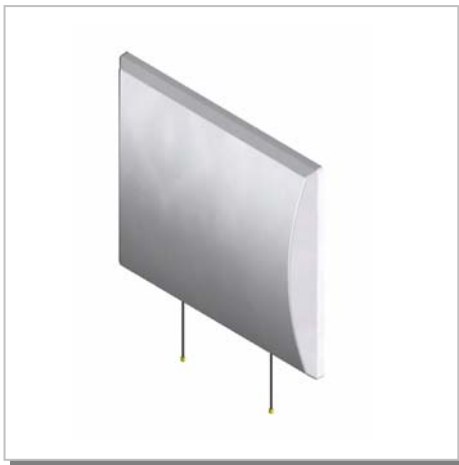
Mechanical Specifications:

Connector :	IPEX
Operation Temp. :	$-30^{\circ}\text{C} \sim +60^{\circ}\text{C}$
Material :	Radome: ABS Mount: Zinc alloy
Dimension (L*W*H) :	330*295*35 mm
Weight :	1344g \pm 20g (w/ mount)
Color :	WHITE



PRO-CELL CO., LTD.

3D Illustration



PRO-CELL CO., LTD.

No.6, Lane 133, Sec.1, Guo-Ji Road, Ta-yuan Hsiang, Taoyuan, Taiwan. R.O.C.

Tel: 886-3-3858288

Fax: 886-3-3858289

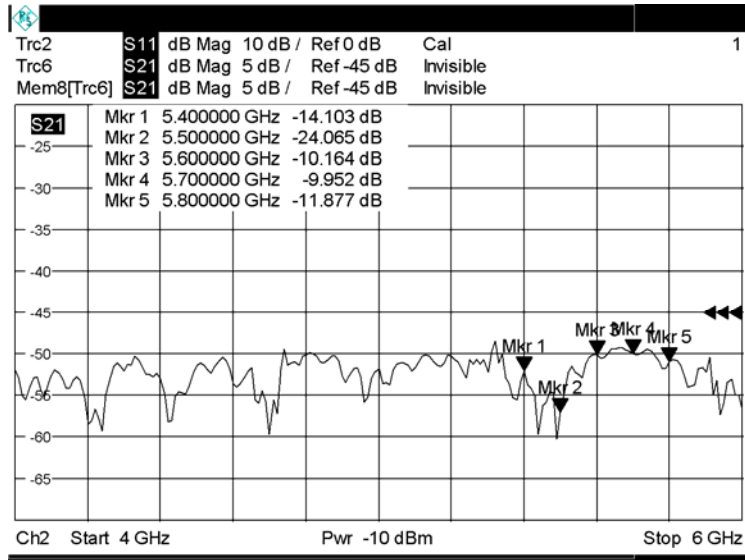
E-mail: sales@antenna.com.tw

<http://www.antenna.com.tw>

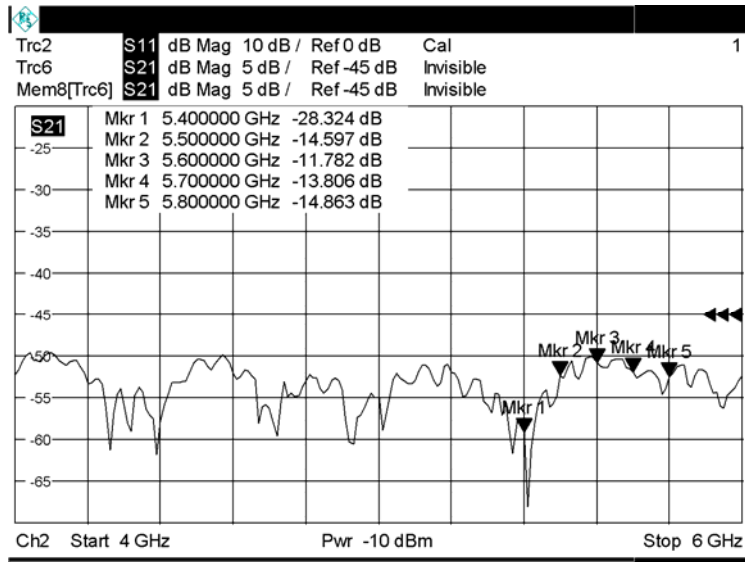


PRO-CELL CO., LTD.

RETURN LOSS



Date: 15.JUL.2008 03:57:07

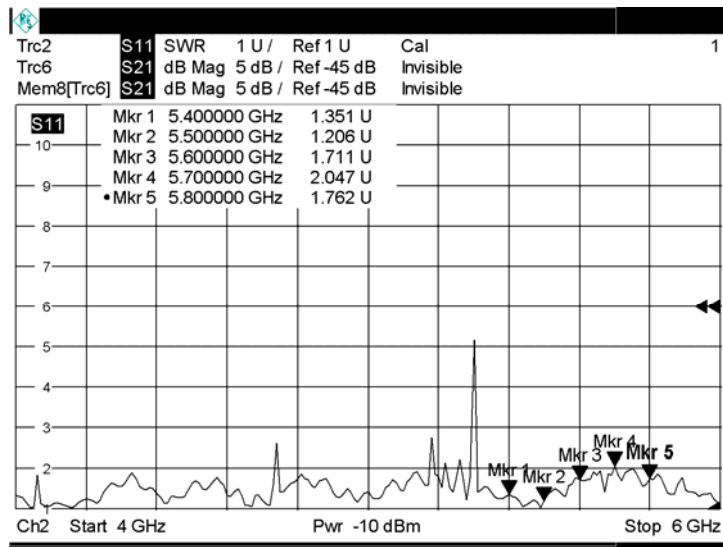


Date: 15.JUL.2008 04:07:55

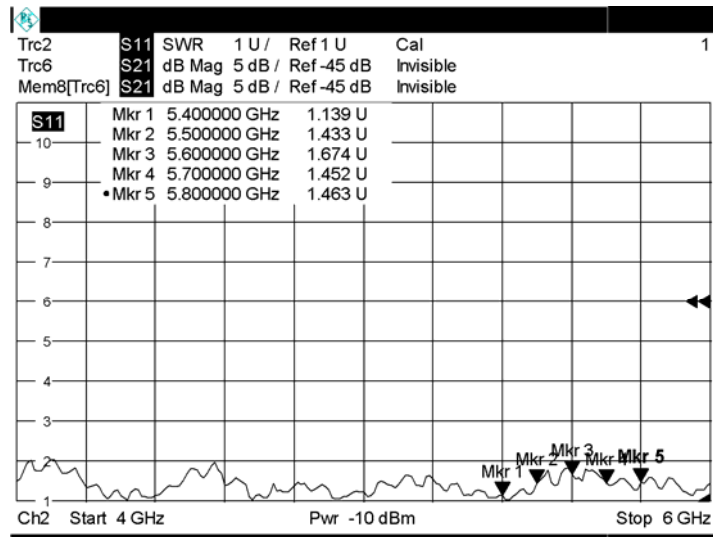


PRO-CELL CO., LTD.

SWR



Date: 15.JUL.2008 03:57:43

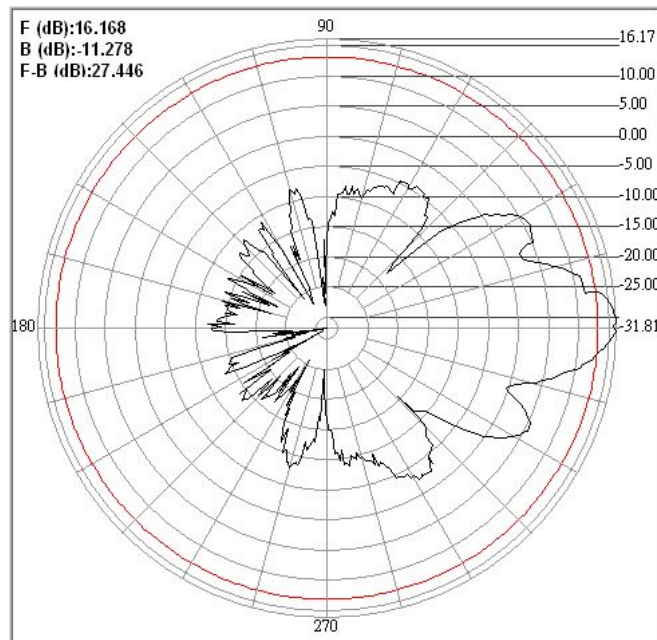
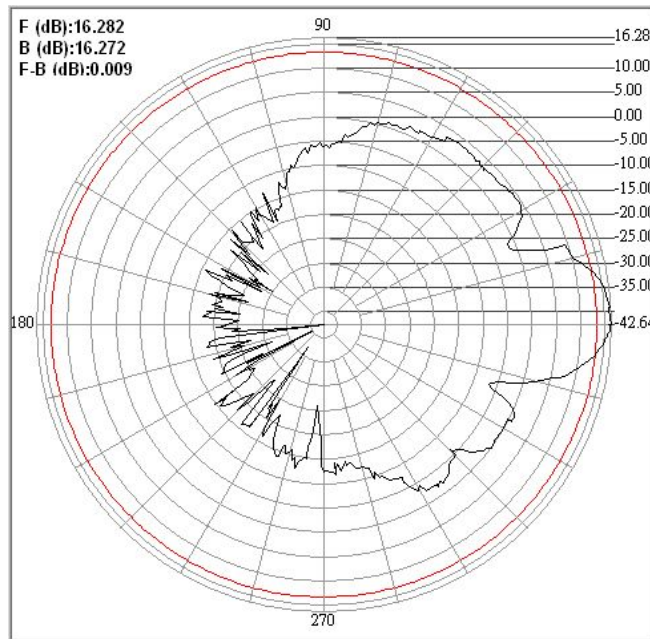


Date: 15.JUL.2008 04:08:16



PRO-CELL CO., LTD.

H-PLANE





PRO-CELL CO., LTD.

E-PLANE

