



PRO-CELL CO., LTD.

SPECIFICATION FOR APPROVAL

Customer :

Model No.: OB-007

Description : 5.45~5.835G

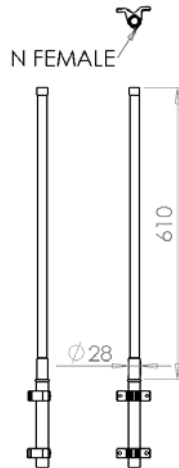
OMEI ANTENNA

Date : 2007/10/11

Rev : 3



PRO-CELL CO., LTD.



Electrical Specifications:

Frequency Range :	5.45~5.835GHz
VSWR :	≤ 2.0
Impedance :	$50\Omega \pm 5\Omega$
Forward Gain :	12dBi
Polarization :	Vertical
Power Handling :	10 Watt
BEAM WIDTH :	H: 360° / E: 10.4°

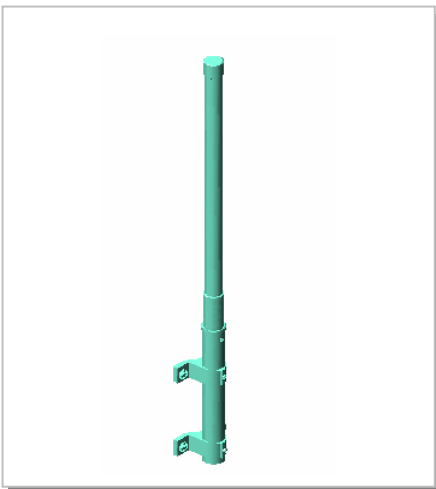
Mechanical Specifications:

Connector :	N Female
Operation Temp :	-30°C ~ +60°C
Material :	Radome: Fiberglass Base: Copper Mount: Aluminum
Dimension (L*W*H) :	Ø28*610mm
Weight :	500g \pm 20g



PRO-CELL CO., LTD.

3D Illustration



PRO-CELL CO., LTD.

No.6, Lane 133, Sec.1, Guo-Ji Road, Ta-yuan Hsiang, Taoyuan, Taiwan. R.O.C.

Tel: +886-3-3858288

Fax: +886-3-3858289

E-mail: sales@antenna.com.tw

<http://www.antenna.com.tw>



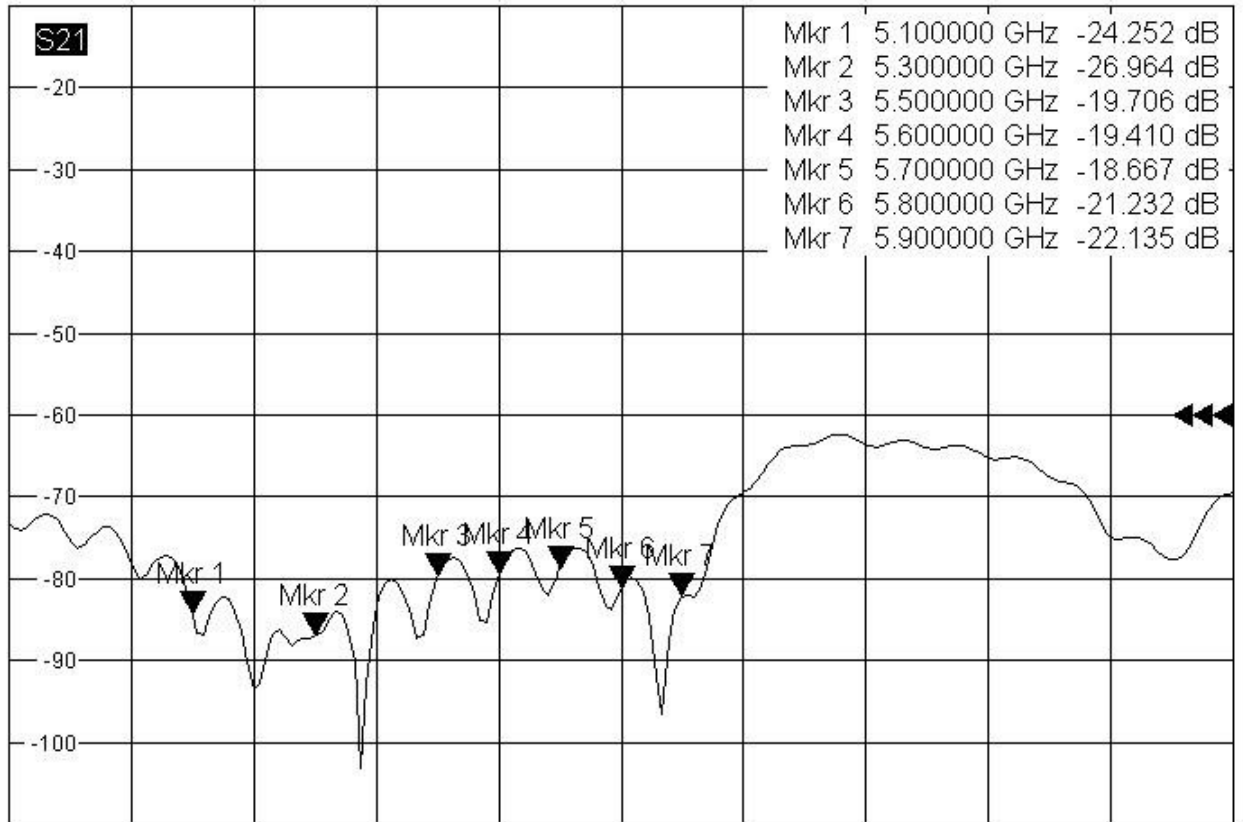
PRO-CELL CO., LTD.

RETURN LOSS



Trc1 S11 dB Mag 10 dB / Ref 0 dB Cal
 Trc2 S21 dB Mag 10 dB / Ref -60 dB Invisible
 Mem3[Trc2] S21 dB Mag 10 dB / Ref -60 dB Invisible

1



Ch1 Center 5.8 GHz

Pwr 0 dBm

Span 2 GHz

9/15/2006, 9:52 AM



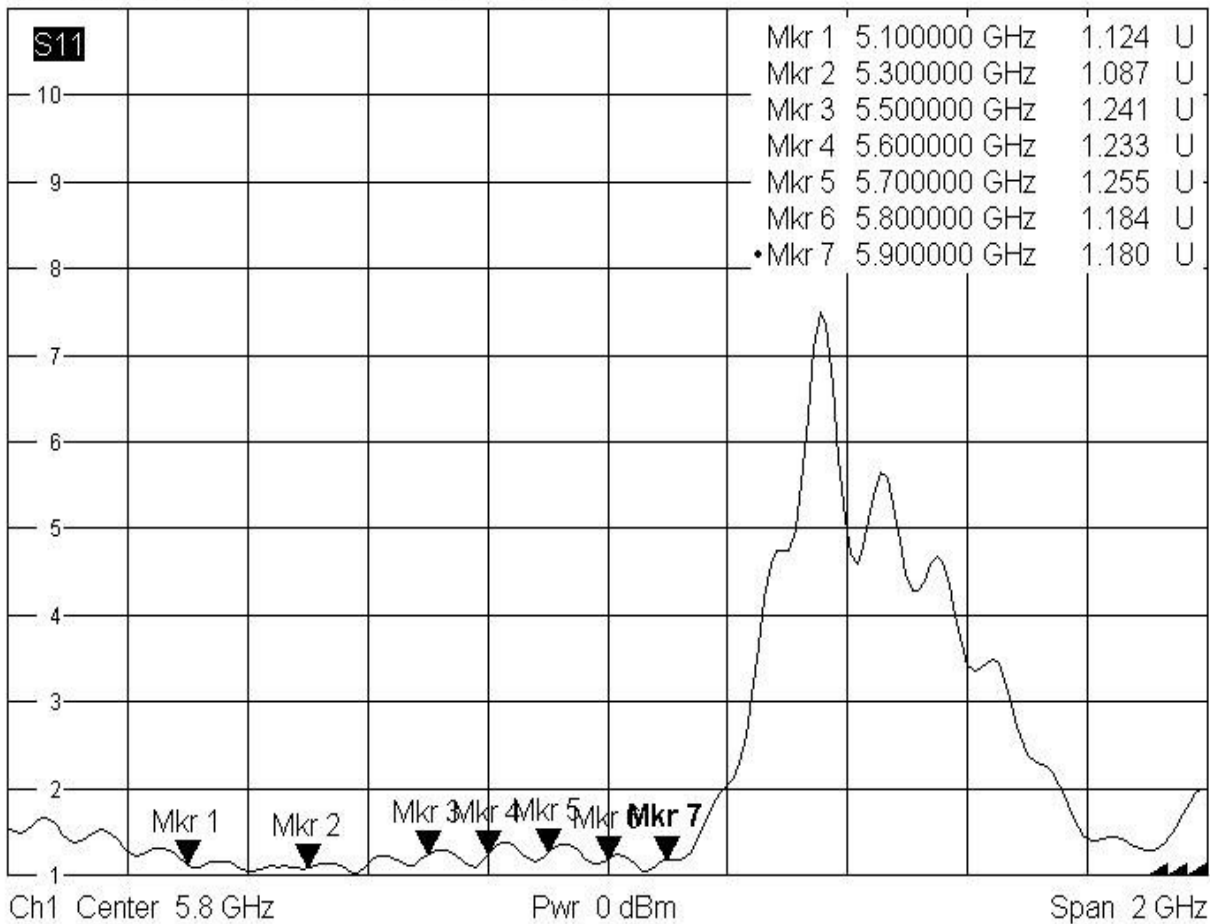
PRO-CELL CO., LTD.

SWR



Trc1 S11 SWR 1 U / Ref 1 U Cal
 Trc2 S21 SWR 1 U / Ref 1 U Invisible
 Mem3[Trc2] S21 SWR 1 U / Ref 1 U Invisible

1

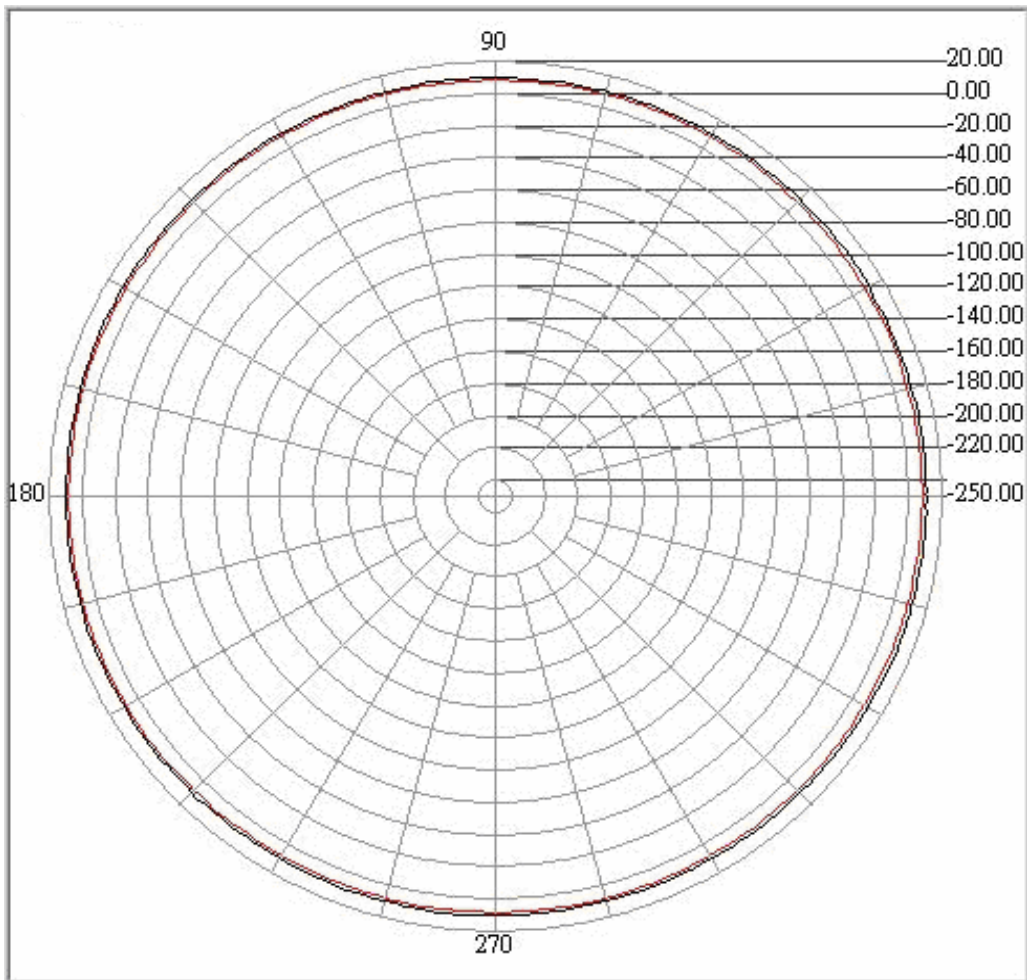


9/15/2006, 9:53 AM



PRO-CELL CO., LTD.

H-PLANE



PRO-CELL CO., LTD.

No.6, Lane 133, Sec.1, Guo-Ji Road, Ta-yuan Hsiang, Taoyuan, Taiwan. R.O.C.

Tel: +886-3-3858288

Fax: +886-3-3858289

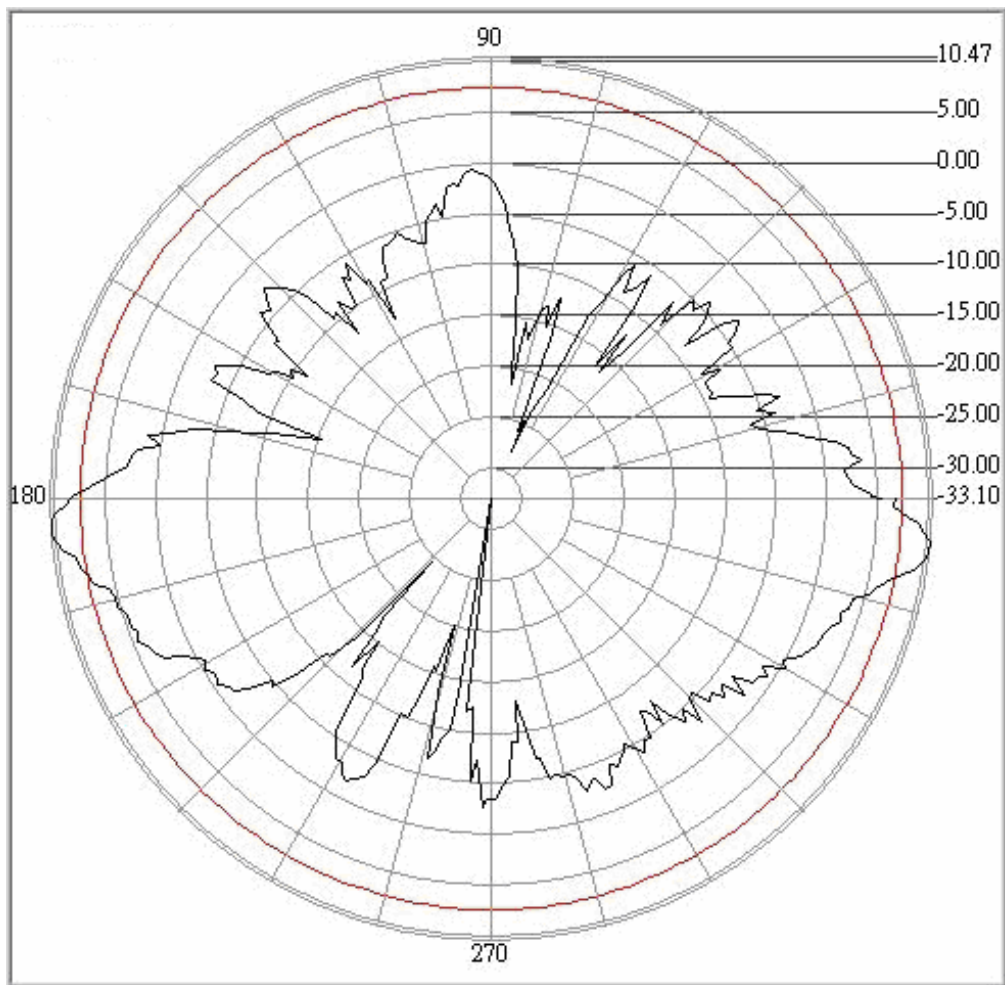
E-mail: sales@antenna.com.tw

<http://www.antenna.com.tw>



PRO-CELL CO., LTD.

E-PLANE



PRO-CELL CO., LTD.

No.6, Lane 133, Sec.1, Guo-Ji Road, Ta-yuan Hsiang, Taoyuan, Taiwan. R.O.C.

Tel: +886-3-3858288

Fax: +886-3-3858289

E-mail: sales@antenna.com.tw

<http://www.antenna.com.tw>