



PRO-CELL CO., LTD.

SPECIFICATION FOR APPROVAL

Customer :

Model No. : OB-006

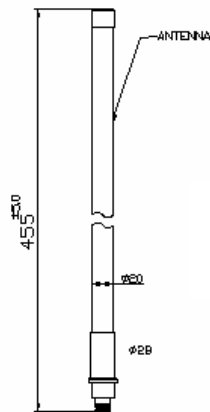
Description : 5.1 ~ 5.5GHz OMNI ANTENNA

Date : 2006/11/07

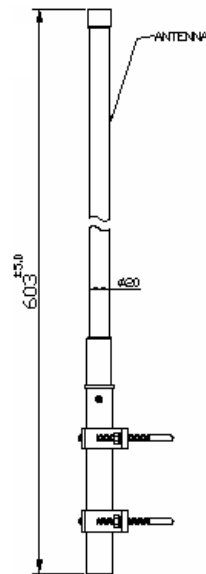
Rev : 1



PRO-CELL CO., LTD.



Antenna



Antenna + mount

Electrical Specifications:

Frequency Range :	5.1 ~ 5.5GHz
VSWR :	≤ 2.0
Impedance :	50Ω ± 5Ω
Gain :	10 dBi
Polarization :	Vertical
Power Handling :	10 Watt
Beam Width :	H: 360° / E: 11.2°

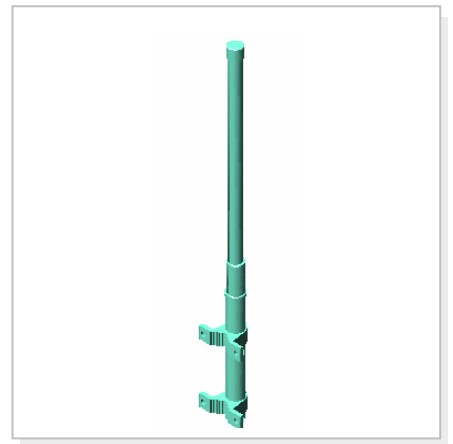
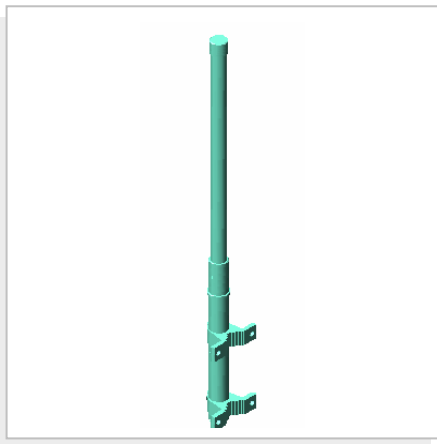
Mechanical Specifications:

Connector :	N Female
Operation Temp. :	-30°C ~ +60°C
Material :	Radome: Fiberglass Base: Copper Mount: Aluminum
Dimension (L*W*H) :	455*28Ø mm
Weight :	440g ± 20g (w/ mount)
Color :	White



PRO-CELL CO., LTD.

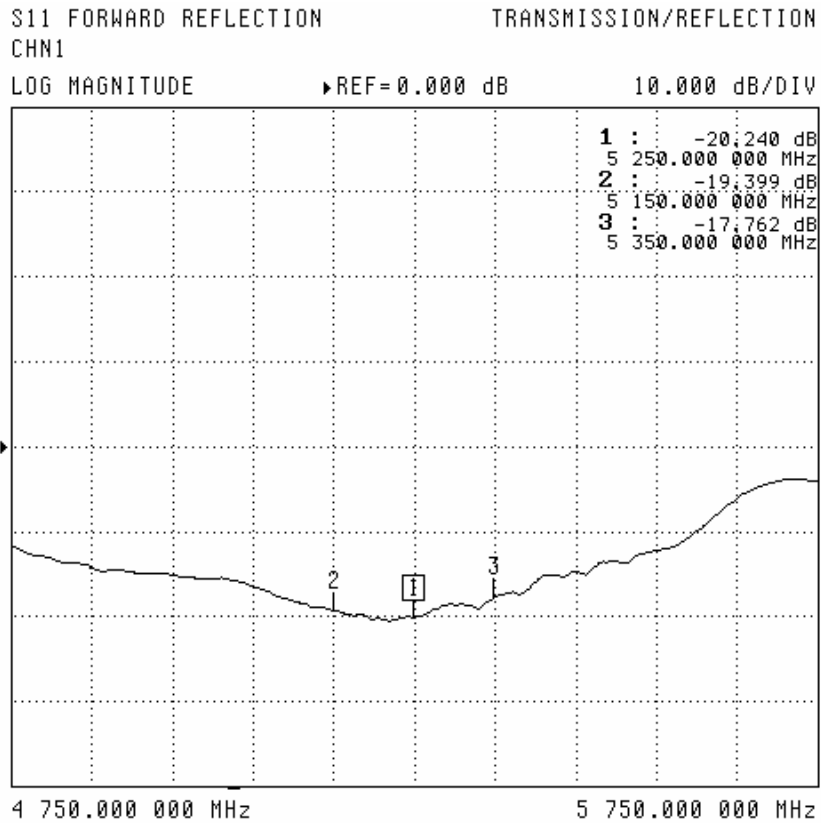
3D Illustration





PRO-CELL CO., LTD.

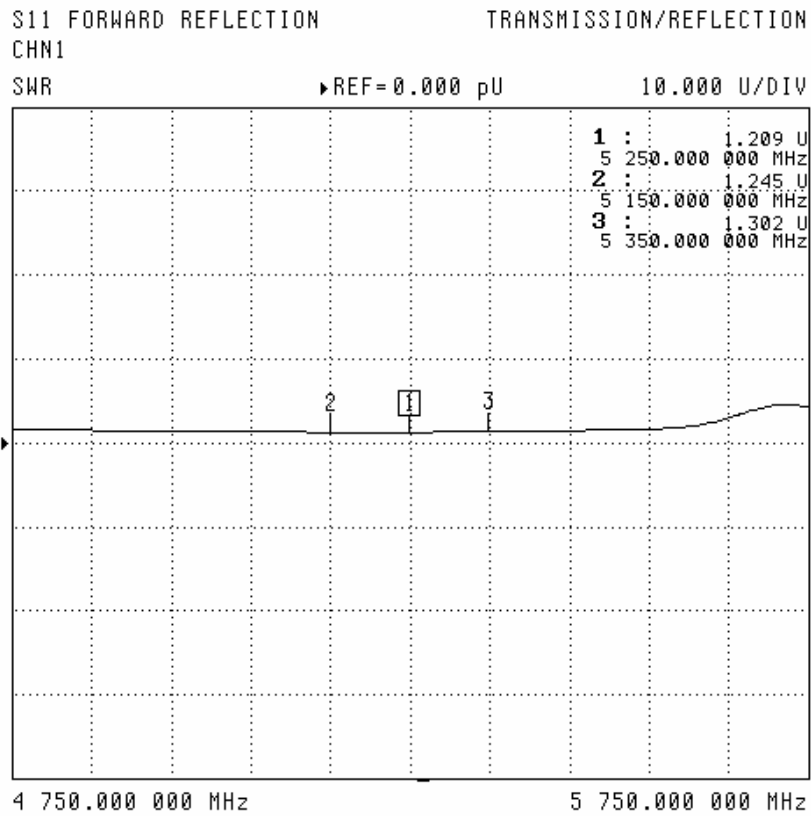
RETURN LOSS





PRO-CELL CO., LTD.

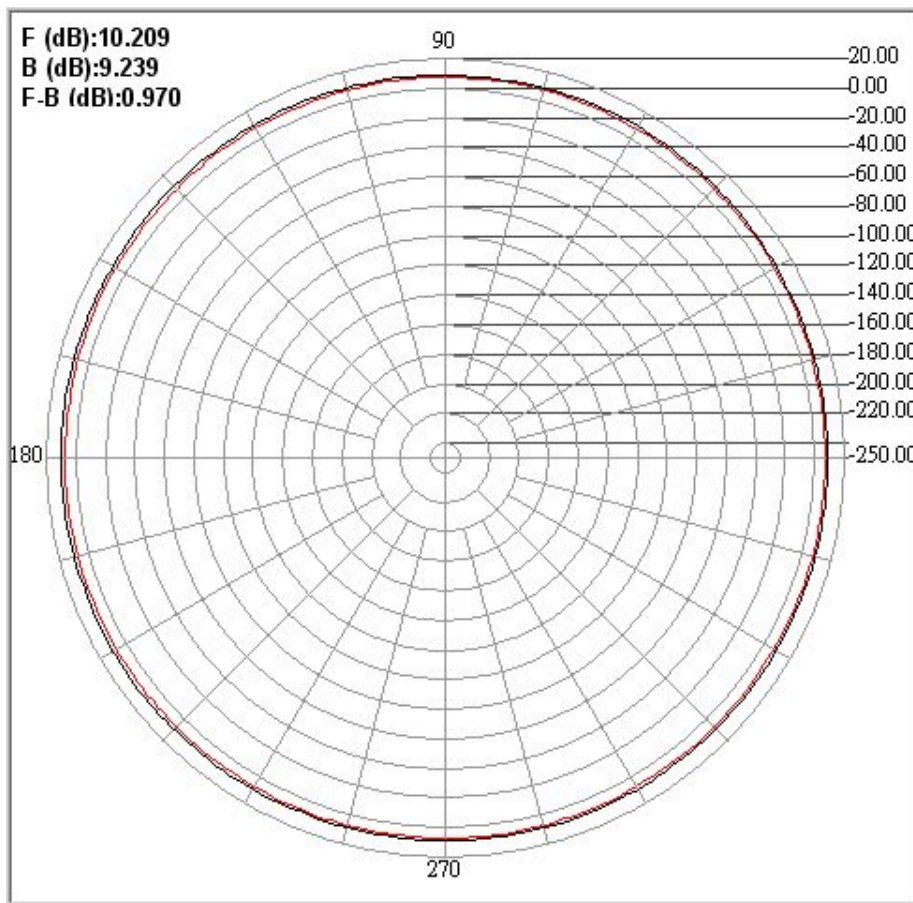
SWR





PRO-CELL CO., LTD.

H-PLANE





PRO-CELL CO., LTD.

E-PLANE

