



PRO-CELL CO., LTD.

SPECIFICATION FOR APPROVAL

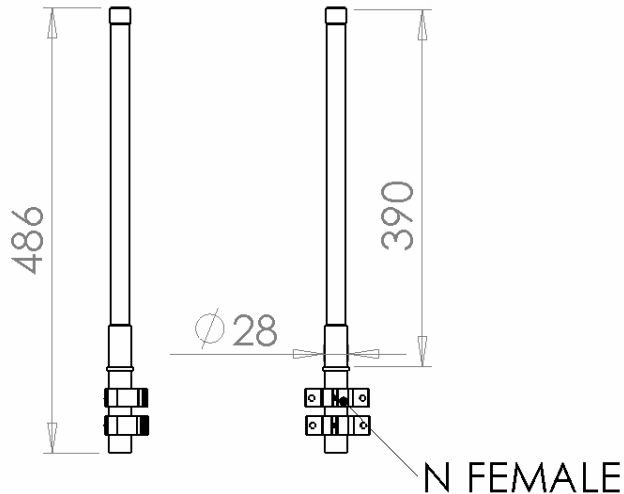
Customer :

Model No. : OB-005

Description : 5.45~5.835 GHz OMNI ANTENNA

Date : 2008/06/20

Rev : 5



Antenna

Antenna + mount

Electrical Specifications:

Frequency Range :	5.45 ~ 5.835GHz
VSWR :	≤ 2.0
Impedance :	50Ω ± 5Ω
Gain :	10 dBi
Polarization :	Vertical
Power Handling :	10 Watt
Beam Width :	H: 360° / E: 11.7°

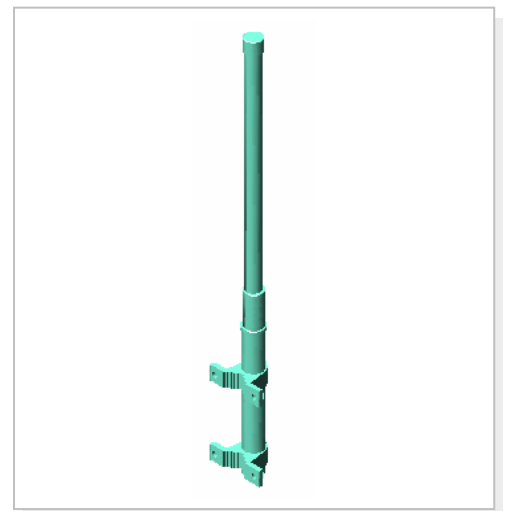
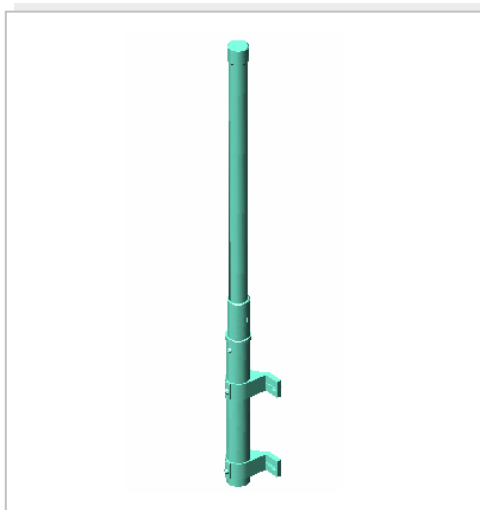
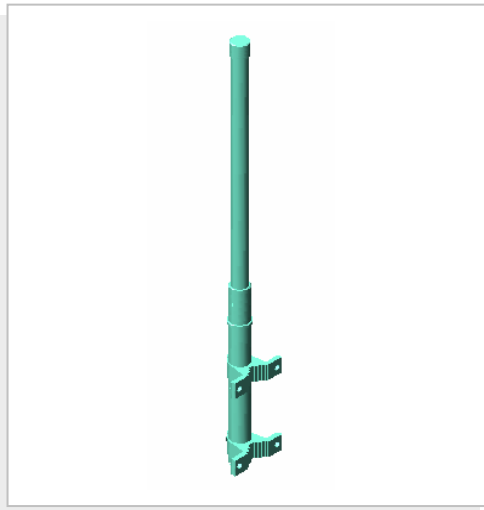
Mechanical Specifications:

Connector :	N Female
Operation Temp. :	-30°C ~ +60°C
Material :	Radome: Fiberglass Base: Copper Mount: Aluminum
Dimension (L*W*H) :	Ø28*486mm
Weight :	380g ± 20g (w/ mount)
Color :	White



PRO-CELL CO., LTD.

3D Illustration

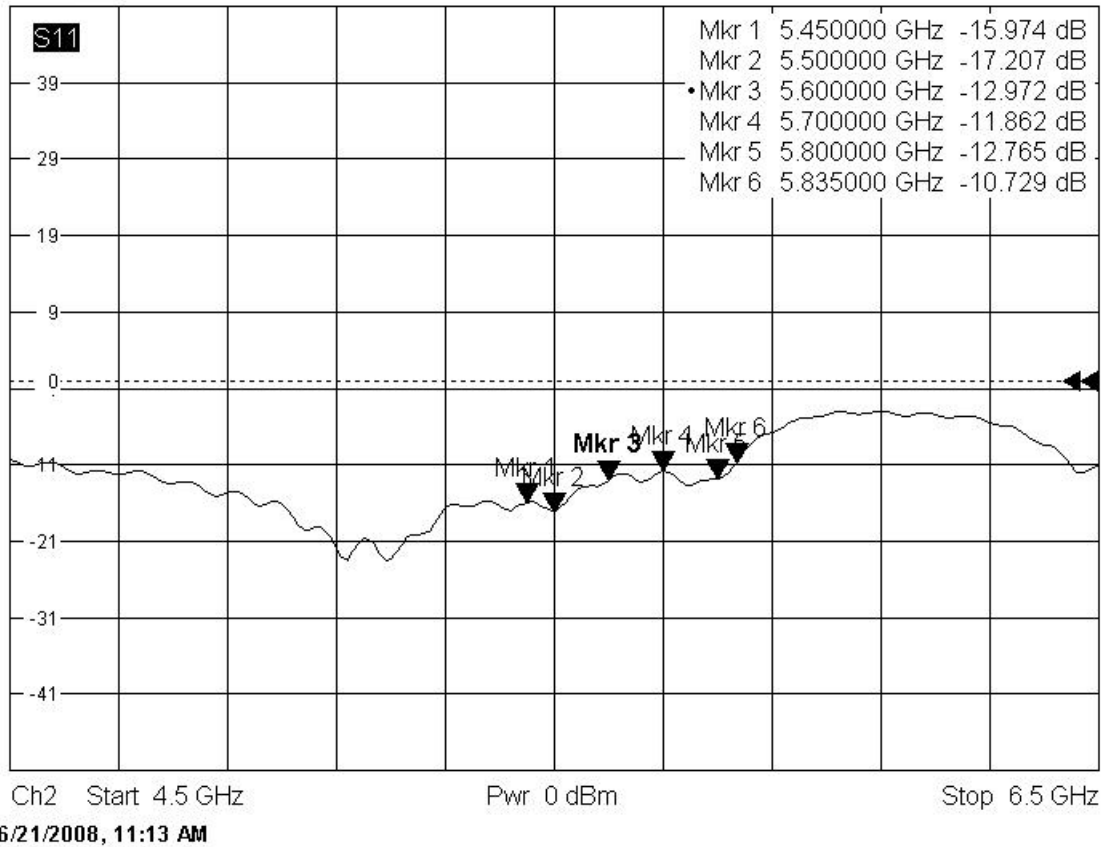




RETURN LOSS

Trc2 **S11** dB Mag 10 dB / Ref 0 dB Cal
Trc3 **S21** dB Mag 10 dB / Ref 0 dB Invisible

2 of 2 (Max)



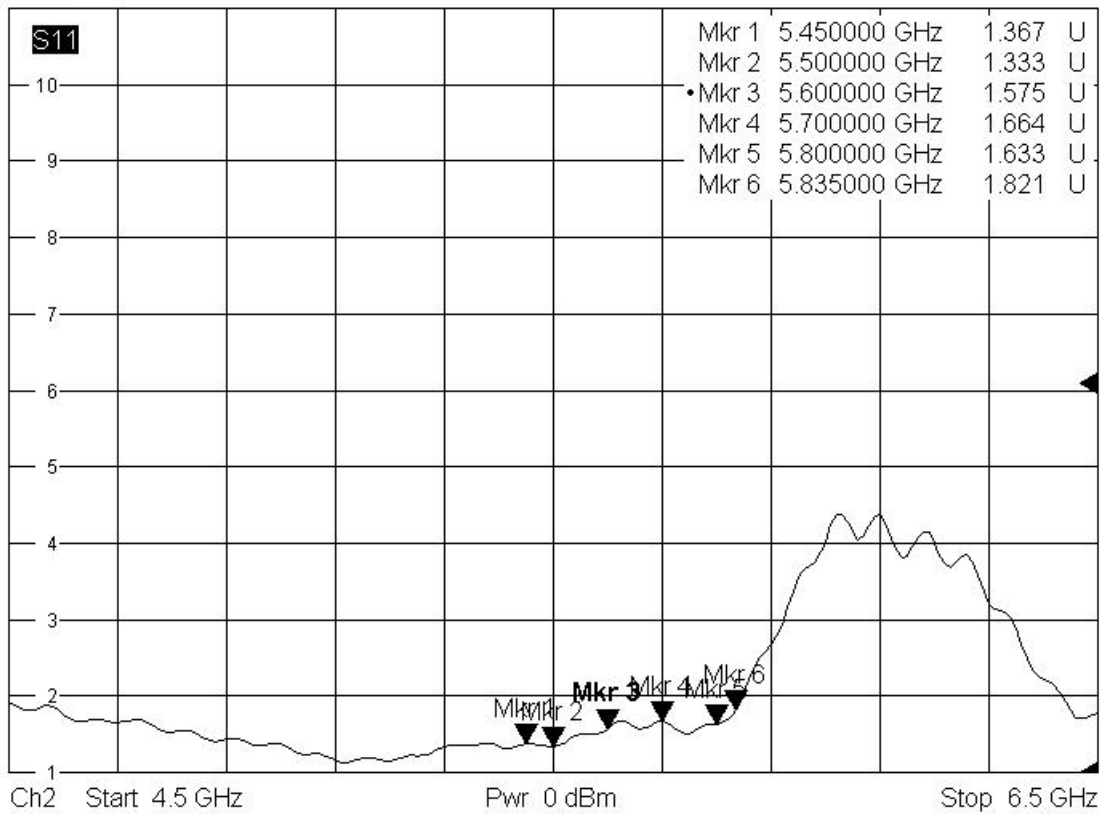


PRO-CELL CO., LTD.

SWR

Trc2 **S11** SWR 1 U / Ref 1 U Cal
 Trc3 **S21** dB Mag 10 dB / Ref 0 dB Invisible

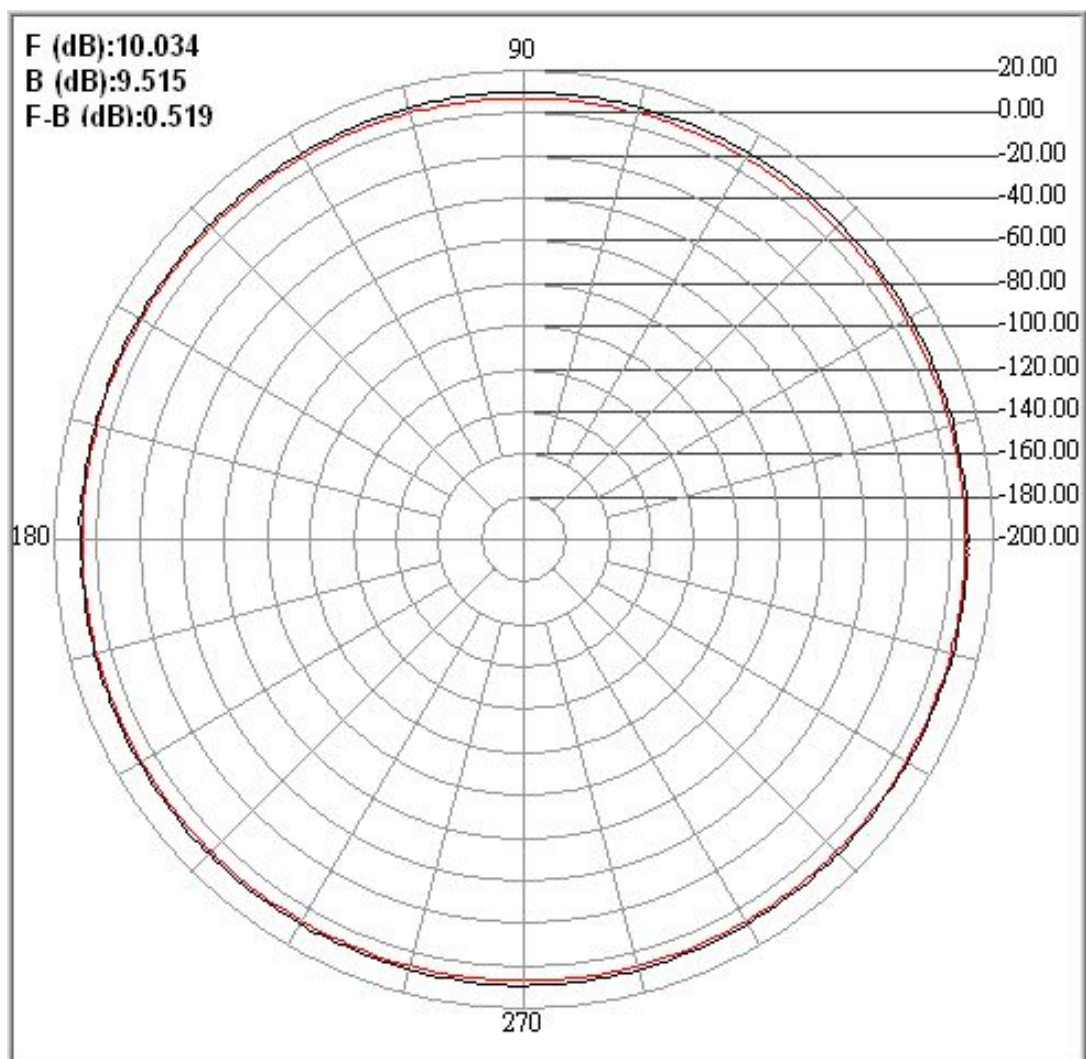
 2 of 2 (Max)





PRO-CELL CO., LTD.

H-PLANE





PRO-CELL CO., LTD.

E-PLANE

