



PRO-CELL CO., LTD.

SPECIFICATION FOR APPROVAL

Customer :

Model No. : OB-003

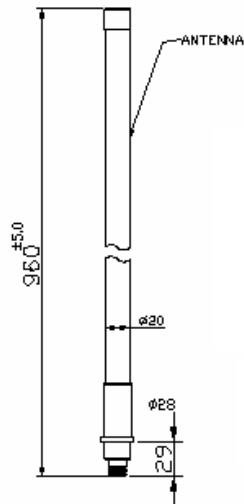
Description : 2.4~2.4835GHz OMNI ANTENNA

Date : 2006/11/07

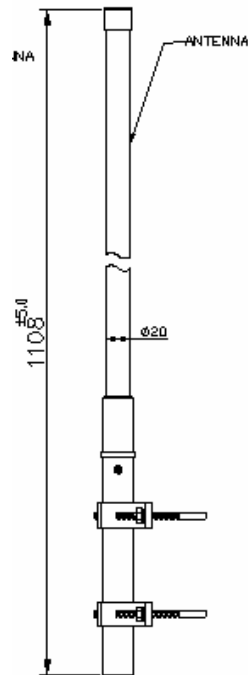
Rev : 1



PRO-CELL CO., LTD.



Antenna



Antenna + mount

Electrical Specifications:

Frequency Range :	2.4 ~ 2.4835GHz
VSWR :	≤ 2.0
Impedance :	$50\Omega \pm 5\Omega$
Gain :	12 dBi
Polarization :	Vertical
Power Handling :	10 Watt
Beam Width :	H: 360° / E: 10°

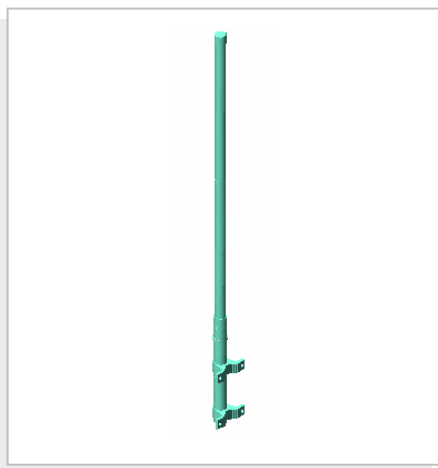
Mechanical Specifications:

Connector :	N Female
Operation Temp. :	$-30^\circ\text{C} \sim +60^\circ\text{C}$
Material :	Radome: Fiberglass Base: Copper Mount: Aluminum
Dimension (L*W*H) :	960*28 \varnothing mm
Weight :	720g \pm 20g (w/ mount)
Color :	White



PRO-CELL CO., LTD.

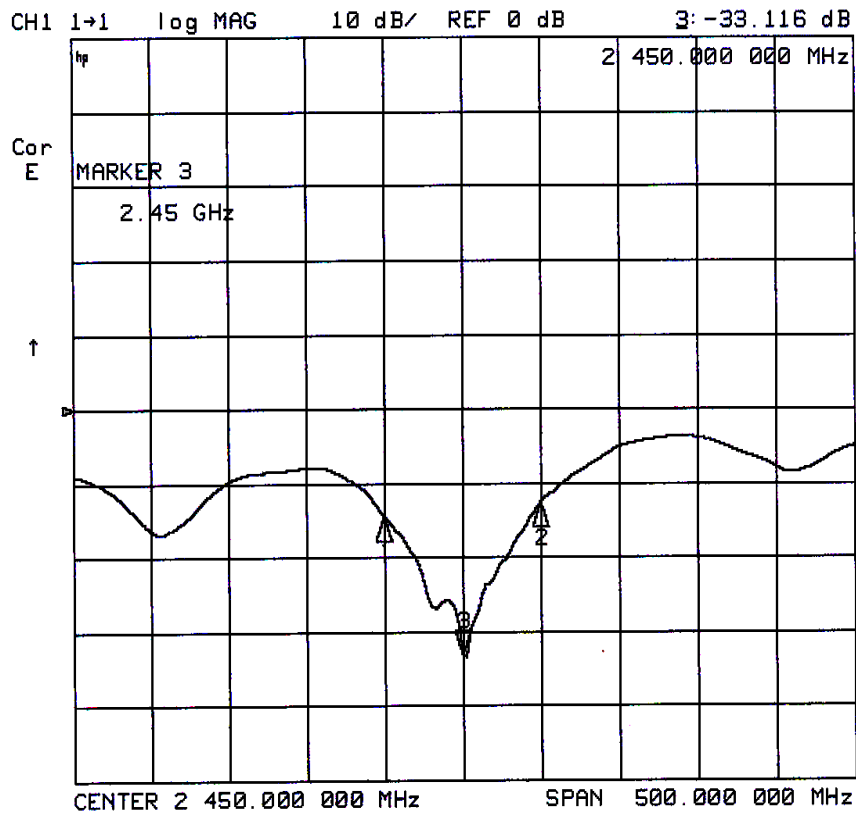
3D Illustration





PRO-CELL CO., LTD.

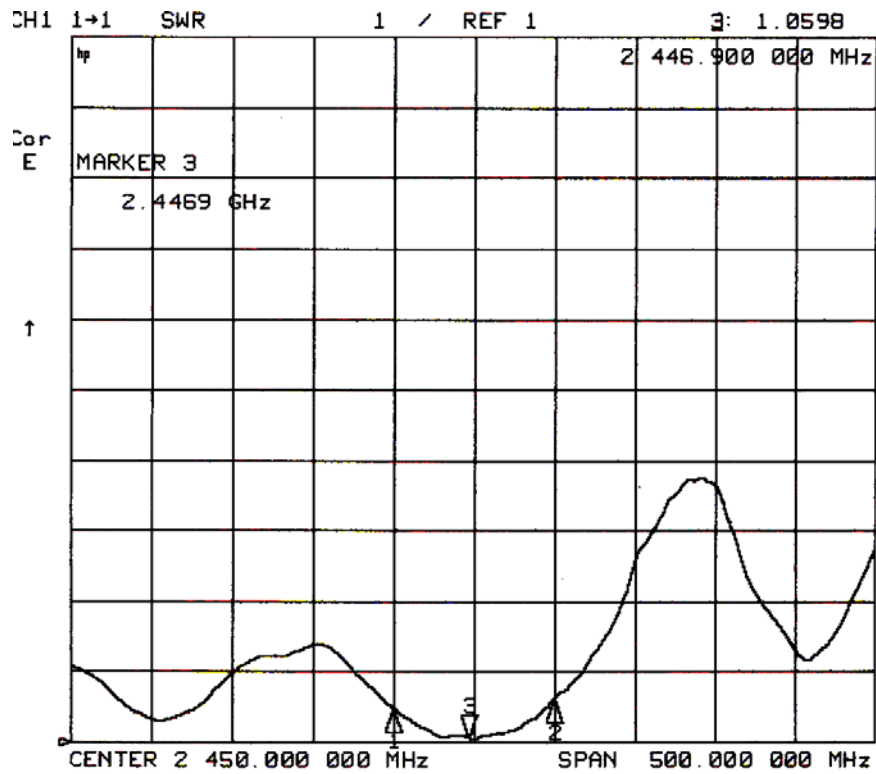
RETURN LOSS





PRO-CELL CO., LTD.

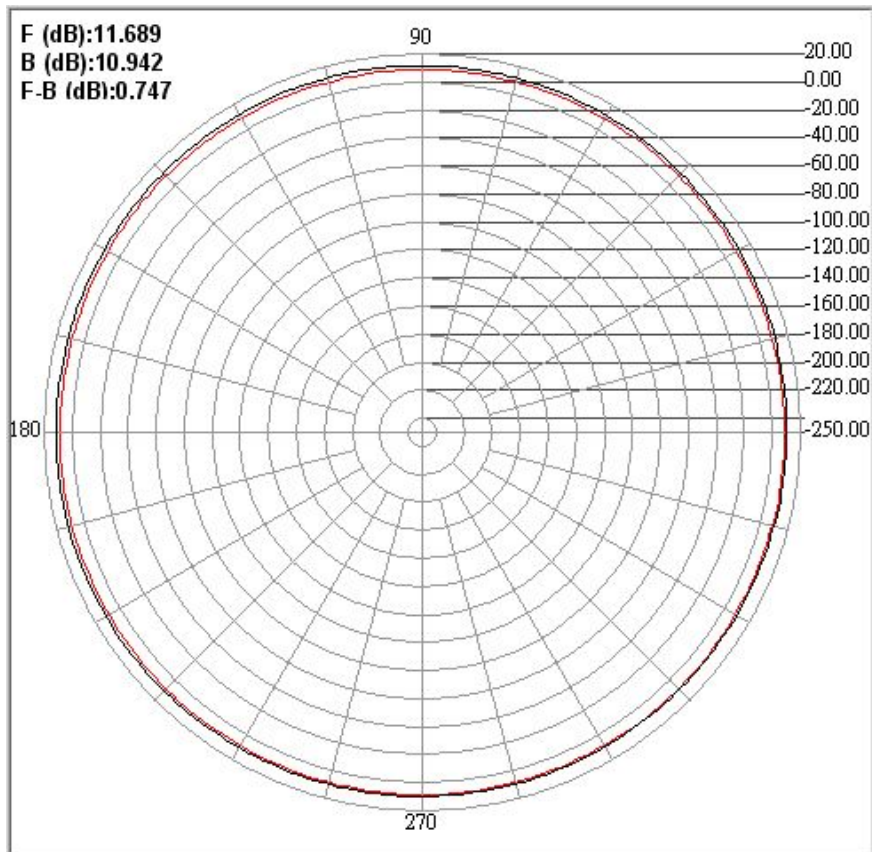
SWR





PRO-CELL CO., LTD.

H-PLANE





PRO-CELL CO., LTD.

E-PLANE

